

Risen

(Easter Song)

For SATB Choir and Piano

Music and Lyrics by
Bronwyn Edwards

Composed for the Chancel Choir, Fauntleroy Church UCC

Risen

Easter Song for SATB and piano

PERFORMANCE NOTES

"Risen" is marked *Tempo Rubato*, with a very slight accelerando at the beginning of each line, and a slight decelerando or ritard at the end of each line, diagrammed like this:

| | | | | | | | | | | | |
In a place of darkness you were cast.....

Specifically, this could apply to most lines up until the "Hallelujah" section beginning at measure 109, with the exception of page 5, where the energy continues on between "In your realm of Light and Love we find" and "Joy and wholeness, shining Lord of Light."

"Risen" begins introspectively, and builds energetically throughout, with specific increases in tempo at page 4 and again on page 10. The song should ebb and flow so as not to sound rhythmically mechanical.

Harmonically, there is frequent dissonance between the voices. Each voice has its own melody. Rehearsal parts are available for download at www.sirensong-music.com. A performance video is available at www.vimeo.com/bronwynedwards.

Other Easter season music available from composer Bronwyn Edwards:

"The Shadow of Hosanna," an anthem for Palm Sunday.

"The Road to Emmaus"

"Easter Sunday Introit," a call-to-worship on Easter Sunday.

More information is available at www.sirensong-music.com

Risen

Easter Anthem for SATB and piano

Music & Lyrics by
Bronwyn Edwards

Tempo rubato
mp

S | A

Measures 1-5 of the vocal part. The melody is in G minor, 3/4 time. The lyrics are: "In a place of dark - ness you were cast,". The piano accompaniment is in G minor, 3/4 time, with a piano (p) dynamic. The piano part consists of chords and single notes in the right and left hands.

1 2 3 4 5

Measures 6-10 of the vocal part. The melody continues with the lyrics: "By the er - ror of our hu - man ways.". The piano accompaniment continues with chords and single notes. Measure 10 features a fermata over the final note.

6 7 8 9 10

mp

Measures 11-15 of the vocal part. The melody continues with the lyrics: "In the realm of dark - ness we would be,". The piano accompaniment continues with chords and single notes. Measure 15 features a fermata over the final note.

11 12 13 14 15

Measures 16-21 of the vocal part. The melody continues with the lyrics: "Des - tined to re - main for all our days". The piano accompaniment continues with chords and single notes. Measures 20 and 21 feature a fermata over the final notes.

16 17 18 19 20 21

S *mp* Lord of Light! *Divisi*

A *with growing energy mp* But not for - ev - er in this

T *with growing energy mp* But not for - ev - er in this

B *with growing energy mp* But not for - ev - er in this

22 23 24 25 26

place of dark - ness would you stay

place of dark - ness would you stay

place of dark - ness would you stay

27 28 29 30 31

mf

An - gel light o - pened wide your tomb.

mf

Light of an - gels o - pened wide your tomb.

mf

Light of an - gels o - pened wide your tomb.

mf

An - gel light o - pened wide your tomb.

32 33 34 35 36 37

To the dazz - ling light you made your way.

To the dazz - ling light you made your way.

To the dazz - ling light you made your way.

To the dazz - ling light you made your way.

38 39 40 41 42 43

poco piu mosso

mp



poco piu mosso

mp



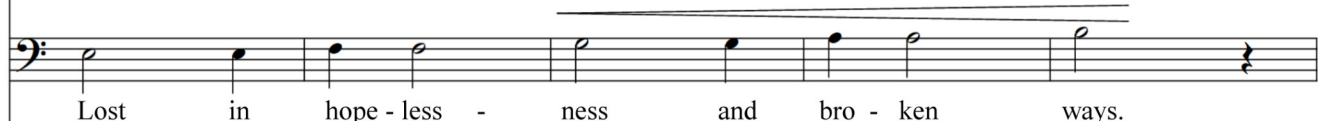
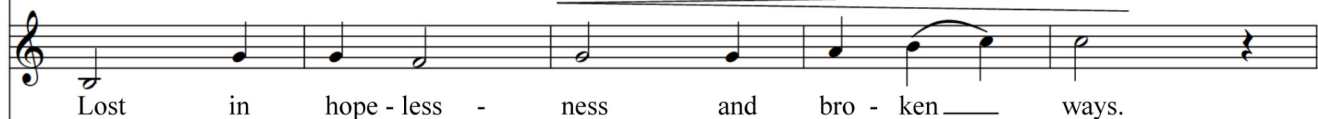
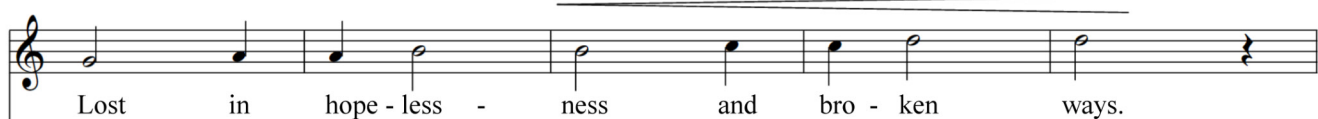
poco piu mosso

mp



poco piu mosso

mp



mp *no breath, no decel.*

In your realm of Light and Love we find

no breath, no decel.

In your realm of Light and Love we find

no breath, no decel.

no breath, no decel.

In your realm of Light and Love we find

no breath, no decel.

mp *(no decel.)*

54 55 56 57 58

Joy and whole - ness, shin - ing Lord of Light.

Joy and whole - ness, shin - ing Lord of Light.

8 Joy and whole - ness, shin - ing Lord of Light.

Joy and whole - ness, shin - ing Lord of Light.

59 60 61 62 63 64

mp

Lord of Light _____

mp

Je - sus Christ, the Son

mp

Je - sus Christ, — the Son

mp

Je - sus Christ, the Son _____

mp

65 66 67 68 69

cresc.

cresc.

cresc.

cresc.

cresc.

ris - es, the Light, the Son ris - es!

ris - es, the Light, — the Son _____ ris - es!

ris - es, the Light, the Son ris - es!

70 71 72 73 74